



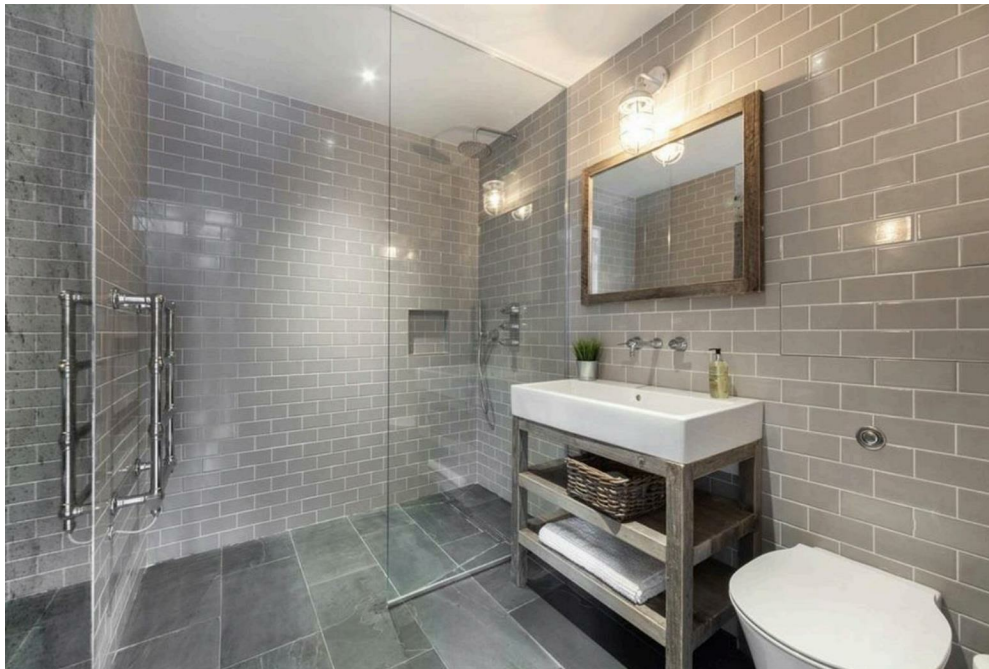
The Print Works House, 83 Great Titchfield Street,
Fitzrovia, W1W

£2,850 Per Week,

NAPIER WATT

T: 0207 935 0011
E: enquiries@napierwatt.co.uk
W: napierwatt.co.uk

35 Berkeley Square, Mayfair, London, W1J 5BF







Description

Located in the heart of Fitzrovia, this unique duplex apartment occupies the top two floors of a recently renovated development designed by Hut architects. The property features a large roof terrace and a contemporary industrial design with exposed brickwork, Critall windows, reclaimed timber doors, and wood flooring with underfloor heating. A state-of-the-art lighting system and integrated cabling support modern home technology. The lower level includes a spacious kitchen diner, reception room, guest cloakroom, and a utility cupboard with storage. Iron stairs lead to the upper level, where a glass-walled corridor connects two double bedrooms. There are two bathrooms, one en-suite, and further stairs leading to a fully decked roof terrace. Great Titchfield Street is well located, close to the amenities of Great Portland Street, Charlotte Street, and Oxford Circus, with Regent's Park a short walk away.

2 Bedrooms : 2 Bathrooms : Roof Terrace : Westminster Council Tax Band G : EPC Rating C

Key Features

- PENTHOUSE
- ARCHITECT-DESIGNED
- LARGE ROOF TETTACE
- EXPOSED BRICK WORK

Terms

Fees & Charges: Tenancies exceeding £100,000 Per annum £480 inc VAT, Tenancies where a company is a tenant £480 Inc VAT.



IMPORTANT: We would inform prospective purchasers that these sales particulars have been prepared as a general guide only. A detailed survey has not been carried out, nor the services, appliances and fittings tested. Room sizes should not be relied upon for furnishing purposes and are approximate. If floor plans are included, they are for guidance only and illustration purposes only and may not be to scale. If there are any important matters likely to affect your decision to buy, please contact us before viewing the property.